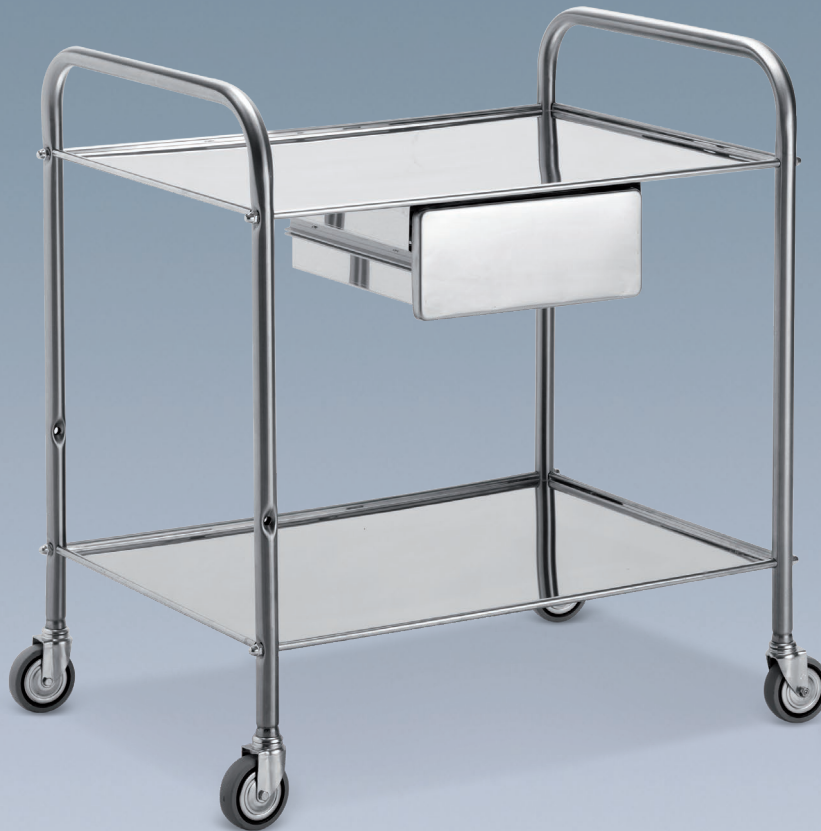


NEW



M600964/1



CARRELLO PER MEDICAZIONE

Costruito interamente in acciaio inox.
Ruote da 80mm. Smontato.
Fornito con cassetto puntato.

M600964/1

Due ripiani

Dim. 60 x 40 x 80 h cm

M600975/1

Due ripiani

Dim. 70 x 50 x 80 h cm



INSTRUMENT TROLLEY

Completely made of stainless steel.
Diam 80mm castors. Disassembled.
Supplied with attached drawer.

M600964/1

Two shelves

Dim. 60 x 40 x 80 h cm

M600975/1

Two shelves

Dim. 70 x 50 x 80 h cm



GUERIDON

Construit en acier inoxydable. Roues
diam.80mm. Démonté.
Livré avec tiroir.

M600964/1

Deux plateaux

Dim. 60 x 40 x 80 h cm

M600975/1

Deux plateaux

Dim. 70 x 50 x 80 h cm



CARRO PARA MEDICACIONES

Totalmente construido de acero inoxidable.
Ruedas de 80mm. Desmontable.
Dotado de cajón.

M600964/1

Dos estantes

Dim. 60 x 40 x 80 h cm

M600975/1

Dos estantes

Dim. 70 x 50 x 80 h cm