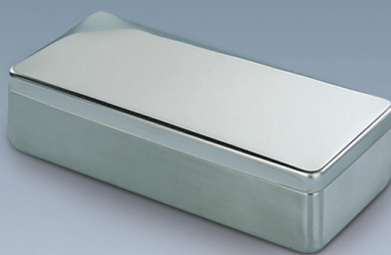
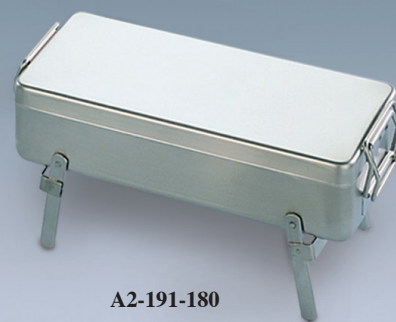




A2-168-180



A2-181-180



A2-191-180

**SCATOLA LISCIA CON MANIGLIA**

Completamente costruito in acciaio inox. Corpo, coperchio e bacinella interna stampati senza saldature. Ganci per il sollevamento della bacinella interna.

Mod.	Dim. Esterne	
A2-168-180	180x80x40	h mm.
A2-169-200	200x100x50	h mm.
A2-170-220	220x120x60	h mm.
A2-171-250	250x120x60	h mm.
A2-172-300	300x120x60	h mm.
A2-173-320	320x150x60	h mm.
A2-174-400	400x160x75	h mm.
A2-175-500	500x200x120	h mm.

SCATOLA LISCIA

Per conservare e sterilizzare strumenti in stufe a secco.

Costruita interamente in acciaio inox. Corpo e coperchio stampati senza alcuna saldatura.

Mod.	Dim. Esterne	
A2-181-180	180x80x40	h mm.
A2-181-180/G	180x80x30	h mm.
A2-182-200	200x100x50	h mm.
A2-182-200/G	200x100x30	h mm.
A2-183-220	220x120x60	h mm.
A2-184-250	250x120x60	h mm.
A2-185-300	300x120x60	h mm.
A2-186-320	320x150x60	h mm.
A2-187-400	400x160x75	h mm.
A2-188-500	500x200x120	h mm.

SCATOLA LISCIA CON SUPPORTO pieghevole sul fondo. Completamente costruito in acciaio inox. Corpo, coperchio e bacinella interna forata stampati. Ganci per il sollevamento della bacinella interna.

Mod.	Dim. Esterne	
A2-191-180	180x80x40	h mm.
A2-192-200	200x100x50	h mm.
A2-193-220	220x120x60	h mm.
A2-194-250	250x120x60	h mm.
A2-195-300	300x120x60	h mm.
A2-196-320	320x150x60	h mm.
A2-197-400	400x160x75	h mm.
A2-198-500	500x200x120	h mm.

**SMOOTH BOX WITH HANDLE**

Completely made of stainless steel. Body, cover and inner tray pressed without welding. Hooks to lift the inner tray.

Mod.	Overall Dimensions	
A2-168-180	180x80x40	h mm.
A2-169-200	200x100x50	h mm.
A2-170-220	220x120x60	h mm.
A2-171-250	250x120x60	h mm.
A2-172-300	300x120x60	h mm.
A2-173-320	320x150x60	h mm.
A2-174-400	400x160x75	h mm.
A2-175-500	500x200x120	h mm.

SMOOTH BOX

To preserve and sterilize instruments inside dry heat sterilizing units.

Entirely made of stainless steel. Body and lid pressed without any welding.

Mod.	Overall Dimensions	
A2-181-180	180x80x40	h mm.
A2-181-180/G	180x80x30	h mm.
A2-182-200	200x100x50	h mm.
A2-182-200/G	200x100x30	h mm.
A2-183-220	220x120x60	h mm.
A2-184-250	250x120x60	h mm.
A2-185-300	300x120x60	h mm.
A2-186-320	320x150x60	h mm.
A2-187-400	400x160x75	h mm.
A2-188-500	500x200x120	h mm.

SMOOTH BOX WITH SUPPORT folding on the bottom. Completely made of stainless steel. Body, cover and inner tray pressed. Hooks to lift the inner tray.

Mod.	Overall Dimensions	
A2-191-180	180x80x40	h mm.
A2-192-200	200x100x50	h mm.
A2-193-220	220x120x60	h mm.
A2-194-250	250x120x60	h mm.
A2-195-300	300x120x60	h mm.
A2-196-320	320x150x60	h mm.
A2-197-400	400x160x75	h mm.
A2-198-500	500x200x120	h mm.

**BOÎTE LISSE AVEC POIGNEE**

Entièrement construite en acier inoxydable. Corps, couvercle et bassin intérieur imprimés sans soudures. Crochets pour le soulèvement du bassin intérieur.

Mod.	Dim. Extérieures	
A2-168-180	180x80x40	h mm.
A2-169-200	200x100x50	h mm.
A2-170-220	220x120x60	h mm.
A2-171-250	250x120x60	h mm.
A2-172-300	300x120x60	h mm.
A2-173-320	320x150x60	h mm.
A2-174-400	400x160x75	h mm.
A2-175-500	500x200x120	h mm.

BOÎTE LISSE

Pour conserver et stériliser les instruments dans les stérilisateur à air chaud. Entièrement construite en acier inoxydable. Corps et couvercle matricés sans aucune soudure.

Mod.	Dim. Extérieures	
A2-181-180	180x80x40	h mm.
A2-181-180/G	180x80x30	h mm.
A2-182-200	200x100x50	h mm.
A2-182-200/G	200x100x30	h mm.
A2-183-220	220x120x60	h mm.
A2-184-250	250x120x60	h mm.
A2-185-300	300x120x60	h mm.
A2-186-320	320x150x60	h mm.
A2-187-400	400x160x75	h mm.
A2-188-500	500x200x120	h mm.

BOÎTE LISSE AVEC SUPPORT pliable sur le fond. Complètement construit en acier inoxydable. Corps, couvercle et bassin intérieur imprimés. Crochets pour le soulèvement du bassin intérieur.

Mod.	Dim. Extérieures	
A2-191-180	180x80x40	h mm.
A2-192-200	200x100x50	h mm.
A2-193-220	220x120x60	h mm.
A2-194-250	250x120x60	h mm.
A2-195-300	300x120x60	h mm.
A2-196-320	320x150x60	h mm.
A2-197-400	400x160x75	h mm.
A2-198-500	500x200x120	h mm.

**CAJA ALISA CON EMPUNADURA**

Completamente hecha de acero inoxidable. El cuerpo, la tapa y la bandeja interior son embutidos sin soldaduras. Asas para levantamiento del baño interior.

Mod.	Medidas Externas	
A2-168-180	180x80x40	h mm.
A2-169-200	200x100x50	h mm.
A2-170-220	220x120x60	h mm.
A2-171-250	250x120x60	h mm.
A2-172-300	300x120x60	h mm.
A2-173-320	320x150x60	h mm.
A2-174-400	400x160x75	h mm.
A2-175-500	500x200x120	h mm.

CAJA ALISA

Para conservar y esterilizar instrumentos en esterilizador de aire caliente. Totalmente construida de acero inoxidable. Caja y tapa estampados sin soldaduras.

Mod.	Medidas Externas	
A2-181-180	180x80x40	h mm.
A2-181-180/G	180x80x30	h mm.
A2-182-200	200x100x50	h mm.
A2-182-200/G	200x100x30	h mm.
A2-183-220	220x120x60	h mm.
A2-184-250	250x120x60	h mm.
A2-185-300	300x120x60	h mm.
A2-186-320	320x150x60	h mm.
A2-187-400	400x160x75	h mm.
A2-188-500	500x200x120	h mm.

CAJA ALISA CON APOYO flexible. Completamente hecha de acero inoxidable. El cuerpo, la tapa y la bandeja interior son embutidos. Asas para levantamiento del baño interior.

Mod.	Medidas Externas	
A2-191-180	180x80x40	h mm.
A2-192-200	200x100x50	h mm.
A2-193-220	220x120x60	h mm.
A2-194-250	250x120x60	h mm.
A2-195-300	300x120x60	h mm.
A2-196-320	320x150x60	h mm.
A2-197-400	400x160x75	h mm.
A2-198-500	500x200x120	h mm.